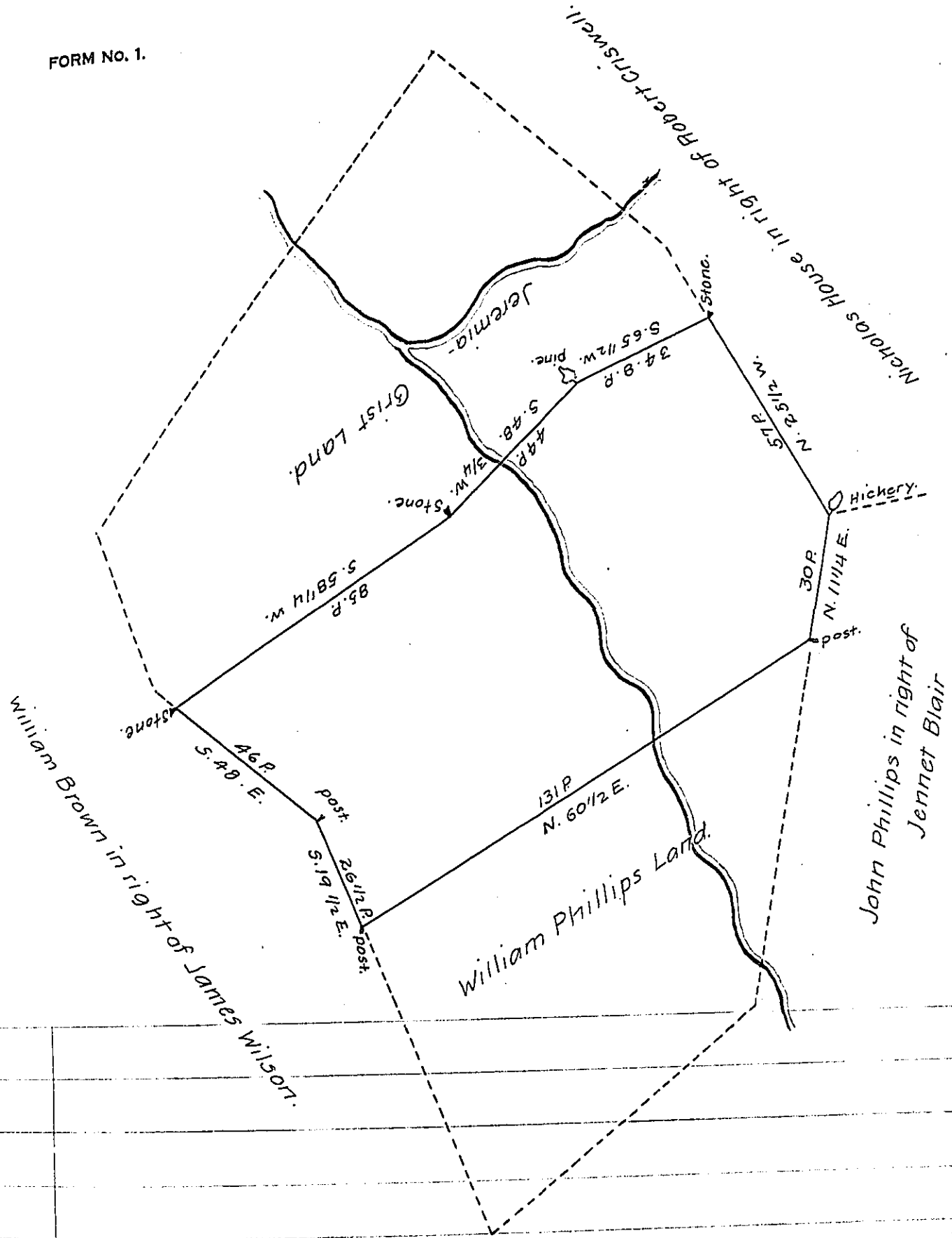


FORM No. 1.



The above Draught represents a Tract of Land situate in West Nottingham Township Chester County containing 66<sup>as</sup> 45<sup>ps</sup> & allowance of Six per cent. &c. Being a part of a Tract of 162 Acres & allowance which was surveyed to Johnathan Edward on his Warrant dated the 15th Day of February 1748

Surveyed March 27th 1821

Jacob Spangler Esqr;  
Surveyor General

P<sup>r</sup> Arthur Andrews J<sup>r</sup> D.S.

IN TESTIMONY that the above is a copy of the original remaining on file in the Department of Internal Affairs of Pennsylvania, made conformably to an Act of Assembly approved the 16th day of February 1833, I have hereunto set my hand and caused the Seal of said Department to be affixed at Harrisburg, this twenty ninth day of October 1907.

*Henry Howell*  
Secretary of Internal Affairs.